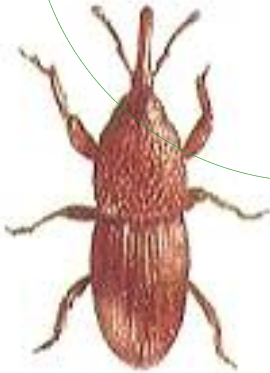


THESE GUYS EAT US OUT OF HOUSE & HOME!
Protecting Stored Profits Makes You More Money
USDA Estimates \$1.5 BILLION Annual Loss



Granary Weevil



Lesser Grain Borer



Confused Flour Beetle



Indian Meal Moth

**RESULTS SHOW BENEFICIAL INSECTS FROM BIOFAC
 KILL THESE PESTS AT A FRACTION OF CHEMICAL COSTS**

USDA has exempted beneficial insects from tolerance tests.

SUSTAINABLE (a self perpetuating program that reproduces itself)
LOW MAINTENANCE (needs less equipment, fuel, labor, and sprayable materials)
INSECT CONTROL SYSTEM (provides greater profits using effective renewable resources)

Conservative, economically functional, biologically diverse, ecologically sound, "environmentally correct"
 ... all are descriptive of a biologically based, holistic pest control system that ultimately contributes to **FARM PROFITS**.
 The strategy for development and maintenance of this system is founded on practical disciplines already part of your farming experience. These disciplines are now united and focused on protection that avoids financial losses common to traditional pest control practices. Component disciplines of Sustainable, Low Maintenance Pest Control include:

- Monitoring
- House Keeping
- Augmentation of Natural Enemies
- Selective Biological Insecticides



Bracon hebetor beneficial Insect